



ARC 1
Scent Diffuser
User Manual & Installation

291 LAKE AVENUE, ST. JAMES, NEW YORK 11780

P: 631-881-4244 C: 914-643-1273

INFO@SCENTEDINTERIORSBYDESIGN.COM

SCENTEDINTERIORSBYDESIGN.COM

FEATURES:

- State-of-the-art cold-air diffusion ensures even scent distribution
- Patented nozzle guarantees the best atomization possible to ensure that scent mist will not leave any residue
- Simple lift-up lid provides easy access for oil bottle refill and maintenance of unit
- The modern, wide-angle LCD allows for easy set up and optimal control over your desired settings
- Whisper-quiet efficient motor consumes little power
- Customized settings to accommodate spaces up to 42,377 cubic feet
- Built-in timer allows you to automatically set the time the unit will turn on and off
- 500ml bottle of oil provides approximately 6 weeks of scent

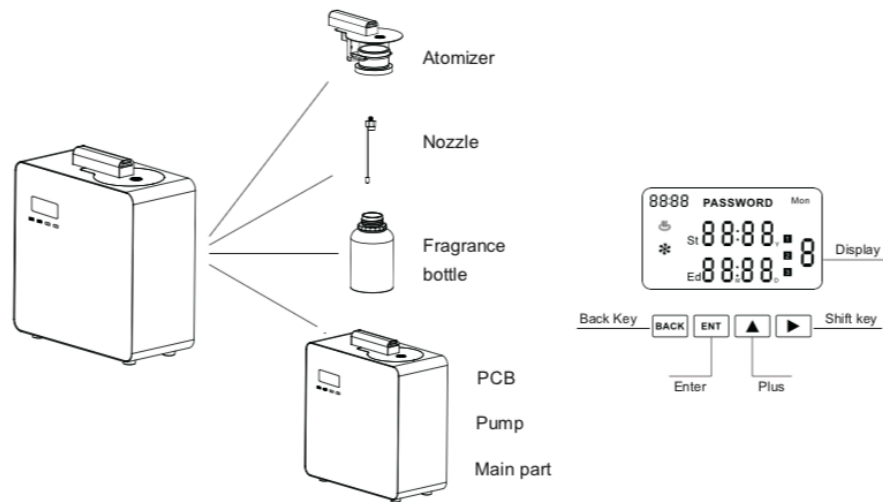
SAFETY:

The following basic safety precautions should always be observed.

Warning: Fire hazard. Can cause electrical shock or other injury if mishandled, including property damage. In cases of severe weather conditions, unplug your device immediately.

- Ensure wire is in optimal condition
- Make sure that diffuser is on an even and stable surface
- Keep away from any open heat sources
-

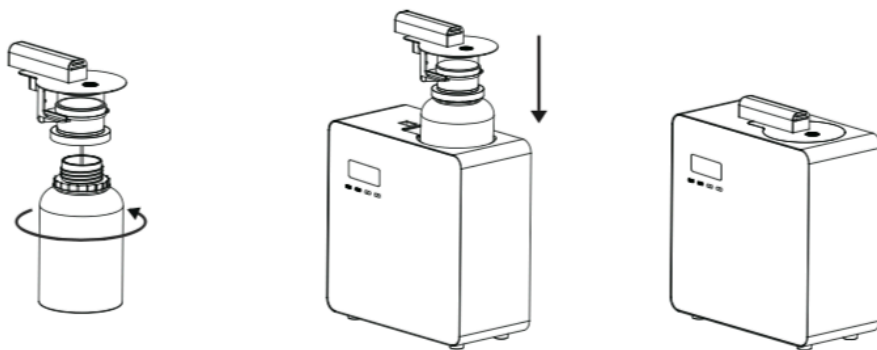
Note: Our oils are specifically designed to work with each of our scent diffusing systems. Use of any oils other than those made by Scented Interiors By Design may damage the machine and will void the one-year warranty.



SETTING UP YOUR DIFFUSER:

1. Find the ideal HVAC location for your diffuser. Make certain that there is an electrical outlet in the location.
2. Using the diffuser handle, lift the diffuser lid.
3. Unscrew the empty bottle and replace with your Scented Interiors By Design fragrance oil bottle. Keep the empty bottle for future cleanings
4. Return the diffuser lid to its original position.

FRAGRANCE BOTTLE INSTALLATION:



1. Make the essential oil bottle align with the atomizer head and counterclockwise it.

2. Make the essential oil bottle align with the machine groove then put it down gently.

3. Done.

PROGRAMMING YOUR DIFFUSER:

- ◆ Connect the adapter to the unit and power source

Diffuser will power on when it connects to the adapter and can also be powered on and off by holding down the ENT key or using the on/off switch on the side of the diffuser.

The LCD screen will turn off after 1 minute of inactivity; unit will still continue to operate as programmed. Press any key to light the screen.



LOCAL TIME AND DATE SETTING:

- ◆ Press the RIGHT arrow key twice to enter the local time interface
- ◆ Press the ENT key, the hour will be flashing. Press the UP arrow and the RIGHT arrow keys at the same time to set the hour, minute, year, month and day.
- ◆ Press the ENT key to save and finish the setting

DIFFUSOR WORKING PERIOD AND CONCENTRATION LEVEL SETTING:

- The diffuser operates on Military time with the hours of 0-24.
- Up to 3 different programs can be set per day
- ◆ While the machine is operating, press the RIGHT arrow key once

- ◆ Press the ENT key
 - ◆ When the 'day' flashes, press the UP arrow key to change the preferred day
 - ◆ Press RIGHT arrow key to move the cursor, then set start time (ST), press UP arrow key to change flashing hour or minute, press RIGHT arrow key to move to next placement. Once the start (ST) time is set, continue pressing the RIGHT arrow key to set the end time (ED).
- *NOTE: The RIGHT arrow key will move the cursor to the setting, the UP arrow key will set the desired time.
- ◆ Press the RIGHT arrow key to move the cursor to the misting concentration level. Use the UP arrow key to change the concentration level
 - ◆ Press the RIGHT arrow key until the screen shows a number 2 to the left of the misting level. This represents the second program of the day.
 - ◆ Follow the same steps as the first program. The RIGHT arrow key moves the cursor to the next placement, and the UP arrow key moves the cursor to select the desired number.
 - ◆ Once you complete the start time, end time and misting level for the second program, press the RIGHT arrow key for the third program.
 - ◆ If three programs are not necessary for the day, make sure you set the desired number of programs, and the remaining programs should be set with a start (ST) time and end (ED) time of 00:00
 - ◆ After you have finished setting the third program, press the ENT key to save the settings.

NOTE: If all of the programs from Monday-Sunday are the same, you need only set the programs for Monday, and the following days will automatically be set as such.

◆ If the programs are different for each day, you will need to set the daily programs individually by repeating the above steps for each day that is different.

MAINTENANCE:

Cleaning the Unit:

Cleaning should be done before the first use and regularly after every 3-6 months, depending on frequency of use

1. Using the empty bottle, fill with standard rubbing alcohol, secure bottle in diffuser
2. Reattach the atomizer to the base, ensuring correct alignment
3. Allow the diffuser to work 10 minutes with the rubbing alcohol

Make certain the unit is unplugged before cleaning the interior.

Simply separate the atomizer lid from the unit and wipe inside and out with a soft, dry cloth.

Clean the nozzle, sprayer tube and connector using rubbing alcohol. Do not use any corrosive products, detergents or thinners to clean your diffuser. These products can harm the unit, particularly the plastic parts which are susceptible to corrosion.

Do not use any oils other than Scented Interiors by Design Ltd. oils. Using other products may damage the unit and will void the warranty.

Please Visit Our Website For A Full Listing Of Our Scent Systems
And Custom Fragrance Collection

SCENTEDINTERIORSBYDESIGN.COM



SCENT DIFFUSER HVAC INSTALLATION GUIDE

An electrical outlet is required to operate this machine and needs to be in the area where the air handler and duct are located.

Make sure that the HVAC fan is set in the 'On' position, not 'Auto'.

The diffuser needs the HVAC fan to push the fragrance oil through the air duct.

- ◆ Find the best place to tap HVAC ductwork (diffuser location).
- ◆ Make sure you tap the main duct, past the air handler.
- ◆ If you only want to scent a portion of the area that the air handler covers, find the branch in the duct that covers your target area to install the diffuser.
- ◆ Drill a 1/4" hole in the duct at the tap point
- ◆ Insert hose 2-3" into the duct. Use foil tape to secure hose in place.
- ◆ Close insulation around hose and use foil tape to seal insulation and hose in place.
- ◆ Connect other end of hose to nozzle at top of diffuser.
- ◆ Make certain that the unit is plugged in.

291 LAKE AVENUE, ST. JAMES, NEW YORK 11780

P: 631-881-4244 C: 914-643-1273

INFO@SCENTEDINTERIORSBYDESIGN.COM

SCENTEDINTERIORSBYDESIGN.COM
