



## MINI 150 Scent Diffuser User Guide



Smart Scent Diffuser for  
Small Commercial & Residential Interior Spaces

[SCENTEDINTERIORSBYDESIGN.COM](http://SCENTEDINTERIORSBYDESIGN.COM)

---



### **Features:**

- . State-of-the-art cold air diffusion transforming an essential oil into a microscopic mist**
- . Light-controlled misting or 12 - hour continuous operation**
- . Four scent concentration levels to accommodate spaces of up to 3532 cubic feet or 442 square feet**
- . Easy unscrew access of oil bottle for refill and maintenance of unit**
- . Sleek and sophisticated plug in provides easy mobility to desired area**

### **Safety:**

**The following basic safety precautions should always be observed.**

- . Please keep the machine in a VERTICAL position.**



**Tilting the unit or lying flat when oil is in the unit will cause spillage and may affect the machine's efficiency and/or damage the pump**

**. Clean the machine periodically with rubbing alcohol using the spare bottle and run for 10 minutes, especially when changing to a different fragrance oil. This will remove any oil build up or remains of a previous oil**

**Note:**

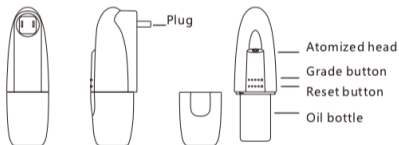
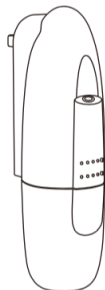
**Our oils are designed to specifically work with each of our scent diffusing systems. Use of any oils other than those made by Scented Interiors By Design, Ltd. may damage the machine.**



# Fragrance Bottle Installation/Operating Instructions:

## Specification

- [ Product ] : AE103
- [ Size ] : 87\*65\*214mm
- [ Volume ] : 100ml
- [ Weight ] : 300g
- [ Coverage ] : 100m<sup>2</sup>
- [ Power ] : AC100V-240V 60/60HZ



## Warning

- Please keep the machine vertical. Tilt or lie flatly may cause the oil overflow. The efficiency of the machine may be affected.
- Shall not modify, disassemble or repair the machine. If any failure happens to the machine, please contact our technical personnel.



## Equipment cleaning

The machine need to be cleaned when below situation happens:

- You're about to change another kind of essential oils
- The atomization volume goes weak

### Cleaning steps:

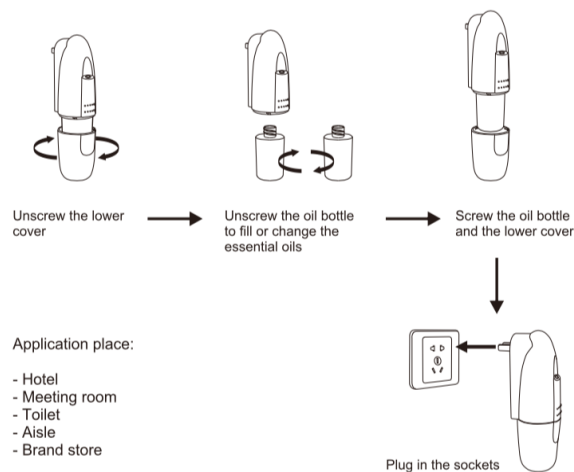
- Unscrew the lower cover and take out the oil bottle
- Find a larger container and fill the industrial alcohol up. Then soak the bottle for 5-10 minutes.
- Airing the bottle.

## Concentration and consumption

| Grade              | G1   | G2   | G3   | G4   |
|--------------------|------|------|------|------|
| Pausing time(s)    | 285s | 135s | 85s  | 60s  |
| Consumption(ml/hr) | 0.07 | 0.15 | 0.23 | 0.30 |

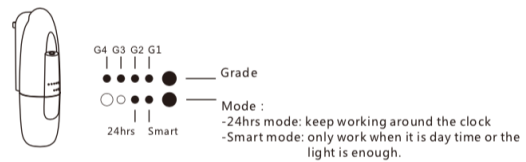
- Notes: 1.The working time above of each grade is 15s.  
2.Different grade and oil may be with different consumption.

## Installation method

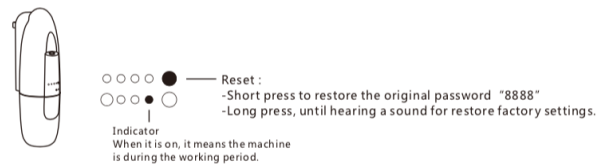


## Operating instructions

Button control version: easy to handle and light sensor mode



APP version: Controlled by APP, more convenient and intelligent





## **Scent Misting & Oil Consumption Grades:**

**G1: Misting 15 seconds; Pause 285 seconds**

**G2: Misting 15 seconds; Pause 135 seconds**

**G3: Misting 15 seconds; Pause 85 seconds**

**G4: Misting 15 seconds; Pause 60 seconds**

**G1 Consumption: .07 ml/hr.**

**G2 Consumption: .15 ml/hr.**

**G3 Consumption: .23 ml/hr.**

**G4 Consumption: .30 ml/hr.**

---

291 LAKE AVENUE, ST. JAMES, NEW YORK 11780

P: 631-881-4244 C: 914-643-1273

INFO@SCENTEDINTERIORSBYDESIGN.COM

SCENTEDINTERIORSBYDESIGN.COM

---